

Expansion Vessel



Intervarem Blue Potable Water Expansion Vessel

8-40 Litre Varem Intervarem Blue Replaceable Membrane Potable Water Expansion Vessel with Carbon Steel Flange

8 - 40 Litre Intervarem Potable Water Expansion Vessel

Description

This expansion vessel is suitable for potable, heating and chilled water applications. The Intervarem Potable expansion vessels have an operating temperature of -10 + 99 °C and comes with a precharged pressure of 2 bar.

The Intervarem has a carbon steel body with blue epoxy polyester paint finish and a stainless steel lange.



Product Specification

AWC Product Code	Varem Product Code	Capacity	Diameter	Height
634-147-0082	S2008362CS000000	8	200	348
634-147-0122	S2012362CS000000	12	270	308
634-147-0191	S2019362CS000000	19	270	415
634-147-0401	S2040362CS000000	40	320	595

Technical Specification

Working Temperature: -10 + 99 °C

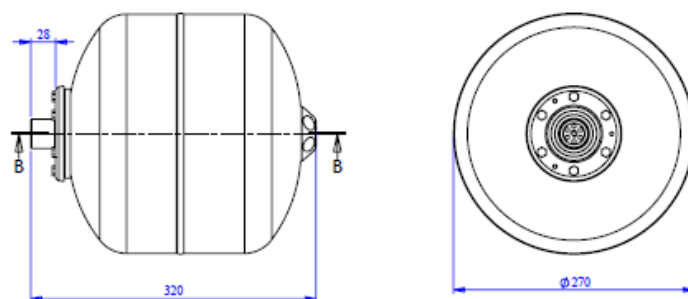
Max Pressure: 8

Test Pressure: 12

Precharged Pressure: 2

Orientation: Vertical

Colour: Blue



The model depicted in the technical drawing above is the 12 Litre

www.advancedwater.co.uk

